

# Quality Product



**M.M.E**<sup>TM</sup>  
**MM ENGINEERING**

**MM ENGINEERING**

No.

Product Name

Page No.

**Hyva**

01	Hyva Palla Cover	02
02	Hyva Palla Assy.	02
03	Hyva Show Grill Jali Assy. (O.M)	02
04	Hyva Show Grill Jali Assy. (N.M)	02
05	Hyva Wipar Panel	03
06	Hyva Bumper	03
07	Hyva Outer Glass Pillar	03
08	Hyva Door Pillar Assy.	03
09	Hyva Inner Glass Pillar	03
10	Hyva Door Pillar Sada	03
11	Hyva Roof (Top)	04
12	Hyva Top Patch	04
13	Hyva Door Cover	04
14	Hyva Door Assy.	04
15	Hyva Radiator Patti	04
16	Hyva Paydan Comp. Assy.	05
17	Hyva Paydan Box	05
18	Hyva Paydan Taliya	05
19	Hyva Golai	05
20	Hyva Big Four Line	05
21	Hyva Rear Channel	05
22	Hyva Main Channel	05
23	Hyva Tail Light Bracket	05
24	Hyva Small Four Line	05

**M.M.E**<sup>TM</sup>  
**MM ENGINEERING**

**L.P.T**

01	L.P.T Front Bonnet Assy.	07
02	L.P.T Front Jali Assy. 2515	07
03	L.P.T Front Jali Assy.	07
04	L.P.T Front Bumper	07
05	L.P.T Front Wiper Panel Comp.Assy.	07
06	L.P.T Front Outer Wiper Panel.	07
07	L.P.T Front Outer Glass Pillar (Bus)	08
08	L.P.T Front Outer Glass Pillar	08
09	L.P.T Front Door Pillar Comp. Assy.	08
10	L.P.T Front Inner Glass Pillar	08
11	L.P.T Front Mirror Patti	08
12	L.P.T Front Van Cona	08
13	L.P.T Front Show Grill Corner Patti	08
14	L.P.T Water Channel	09
15	L.P.T Door Cover With Patti	09
16	L.P.T Handel Patti	09
17	L.P.T Door Assy.	09
18	L.P.T Inner Golai	10
19	L.P.T Paydan Comp. Assy. (Murga)	10
20	L.P.T U. Paydan	10
21	L.P.T Paydan Taliya	10
22	L.P.T Half Paydan Taliya Assy.	10
23	L.P.T Inner Paydan	10
24	L.P.T Outer Golai	10
25	L.P.T Roof (Top)	11
26	L.P.T Rear Pillar Comp. Assy.	11
27	L.P.T Rear Pillar Lover Cona Patch	11
28	L.P.T Tyre Mudguard	11

**L.P**

01	L.P Palla Assy.	13
02	L.P Palla Cover	13
03	L.P Center Patta	13
04	L.P Bumper Cona 3118	13
05	L.P Jali	13
06	L.P Jali 3118	13
07	L.P Bumper 3118	14
08	L.P Bumper With Cona 3118	14
09	L.P Two Clipe Bumper	14
10	L.P Four Clipe Bumper	14
11	L.P Bumper Assy.	14
12	L.P Tc Bumper	14
13	L.P Tc Bumper (N.M)	14

**S.E**

01	S.E Bonnet Assy.	16
02	S.E Bonnet Frame Assy.	16
03	S.E Mudguard	16
04	S.E Small Mudguard	16
05	S.E Inner Partition Assy.	16
06	S.E Inner Partition (Sada)	16
07	S.E Half Frame	16
08	S.E Radiator Bracket	16
09	S.E Talvar Patti (Glass Gudder Patti)	17
10	S.E Wiper Panel	17
11	S.E Bumper Assy. (N.M)	17
12	S.E Bumper Patra	17
13	S.E Outer Glass Pillar	17
14	S.E Outer Khidki Patch	17
15	S.E Chasma	17
16	S.E Center Dabda	18
17	S.E Cabin Chappu	18
18	S.E Door Chappu	18
19	S.E Golai	18
20	S.E Khidki Dhakkan	18
21	S.E Top Door Pillar Assy.	18
22	S.E Paydan Taliya	19
23	S.E Inner Khidki Patch	19
24	S.E Four Line (Rear)	19
25	S.E Four Line (Front)	19
26	S.E Three Line	19
27	S.E Five Line	19

**A.LAYLAND**

01	A/L Palla	21
02	A/L Palla With Bracket	21
03	A/L Wiper Panel	21
04	A/L Bumper	21
05	A/L Head Light Bazzar (O.M)	21
06	A/L Head Light Bazzar (N.M)	21
07	A/L Head Light Bazzar Innar (N.M)	21
08	A/L Main Channel	22
09	A/L Main Channel Assy.	22
10	A/L Four Line	22
11	A/L Cargo Bonnet (N.M)	22
12	A/L Cargo Bonnet (O.M)	22
13	A/L Cargo Wiper Panel	22

**M.M.E**<sup>TM</sup>  
MM ENGINEERING

**Hywa**



M.M.E- 01



Hyva Palla Cover

M.M.E- 02



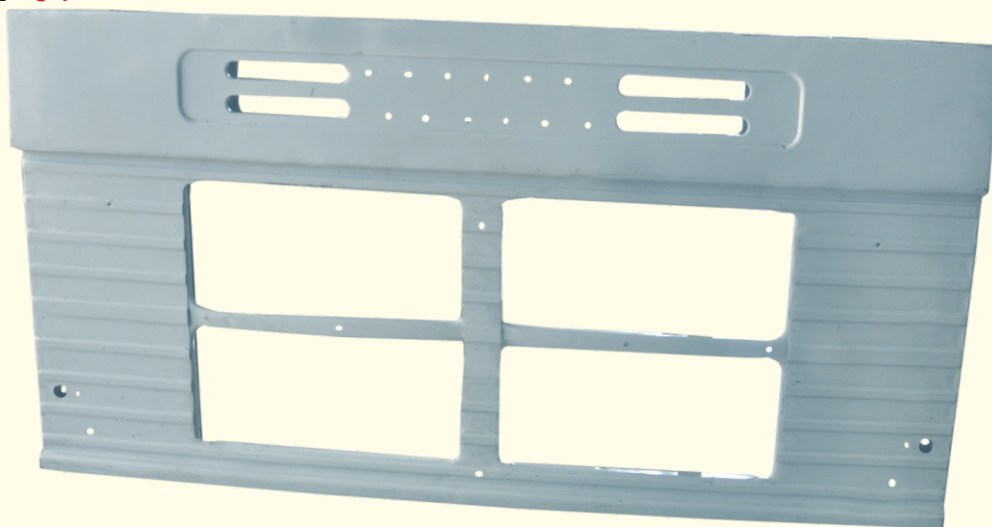
Hyva Palla Assy.

M.M.E- 03



Hyva Show Grill Jali Assy. (O.M)

M.M.E- 04



Hyva Show Grill Jali Assy. (N.M)

M.M.E- 05



M.M.E- 06

Hyva Wipar Panel



Hyva Bumper

M.M.E- 07



Hyva Outer Glass Pillar

M.M.E- 08



Hyva Door Pillar Assy.

M.M.E- 09



Hyva Inner Glass Pillar

M.M.E- 10



Hyva Door Pillar Sada

M.M.E- 11



M.M.E- 12

Hyva Roof (Top)



Hyva Top Patch

M.M.E- 13



Hyva Door Cover

M.M.E- 14



Hyva Door Assy.

M.M.E- 15



Hyva Radiator Patti

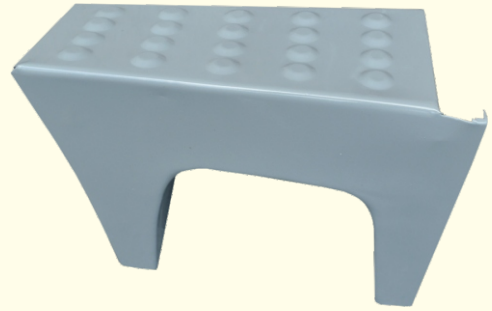


M.M.E- 16



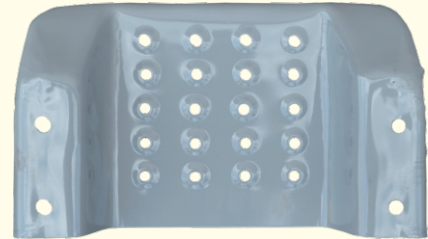
Hyva Paydan Comp. Assy.

M.M.E- 17



Hyva Paydan Box

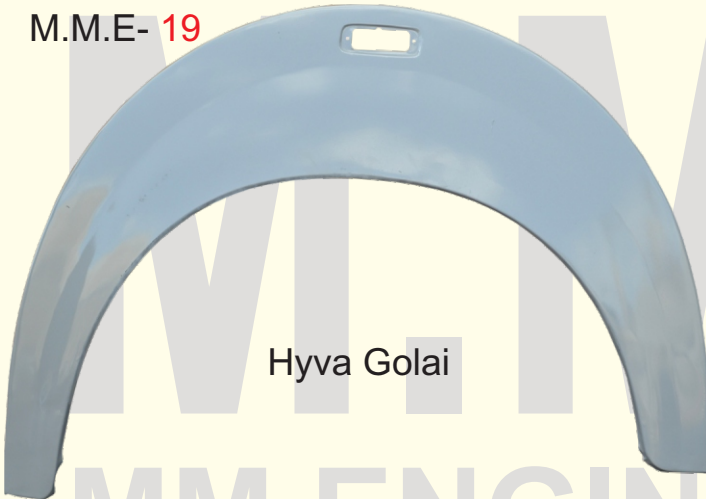
M.M.E- 18



Hyva Paydan Taliya

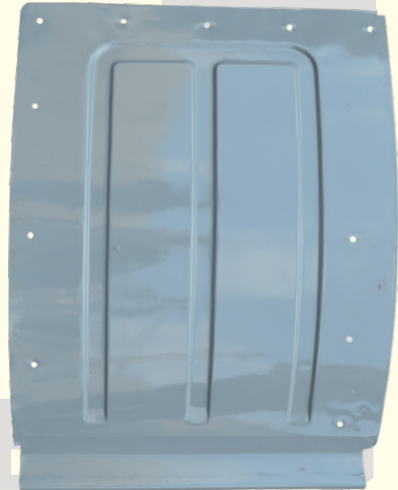


M.M.E- 19



Hyva Golai

M.M.E- 20



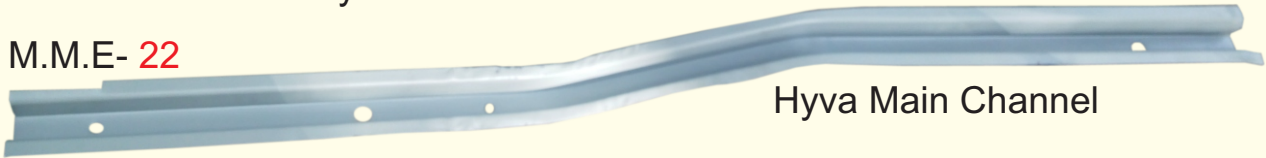
Hyva Big Four Line

M.M.E- 21



Hyva Rear Channel

M.M.E- 22



Hyva Main Channel

M.M.E- 23



Hyva Tail Light Bracket

M.M.E- 24



Hyva Small Four Line

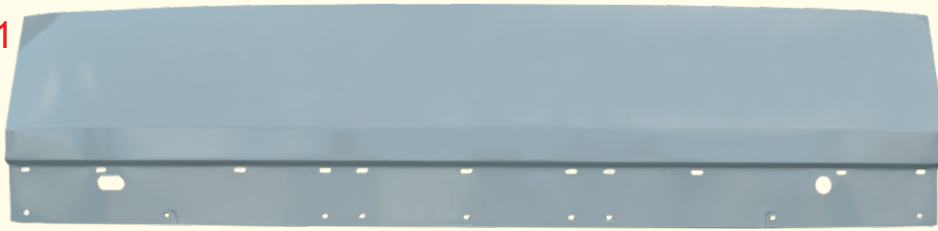
**M.M.E**<sup>TM</sup>  
**MM ENGINEERING**

**LPT**



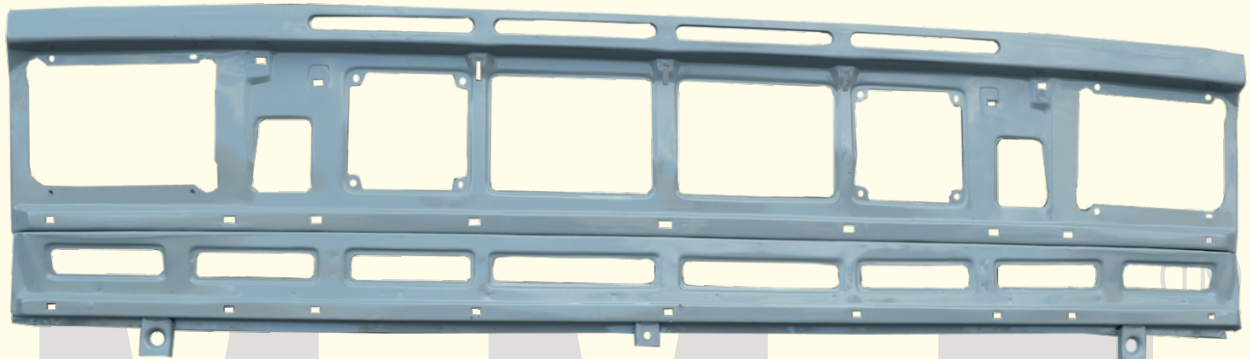
L.P.T

M.M.E- 01



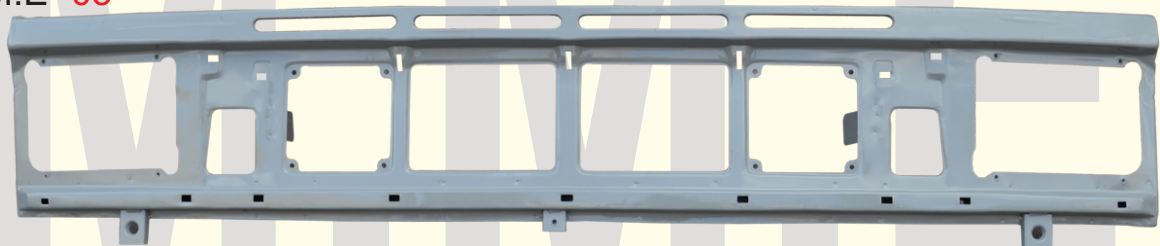
L.P.T Front Bonnet Assy.

M.M.E- 02



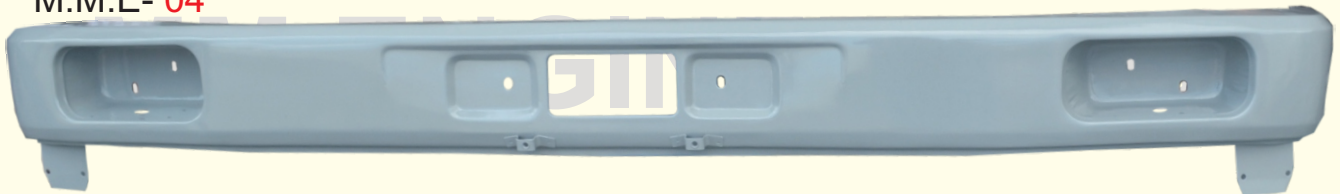
L.P.T Front Jali Assy. 2515

M.M.E- 03



L.P.T Front Jali Assy.

M.M.E- 04



L.P.T Front Bumper

M.M.E- 05



L.P.T Front Wiper Panel Comp.Assy.

M.M.E- 06



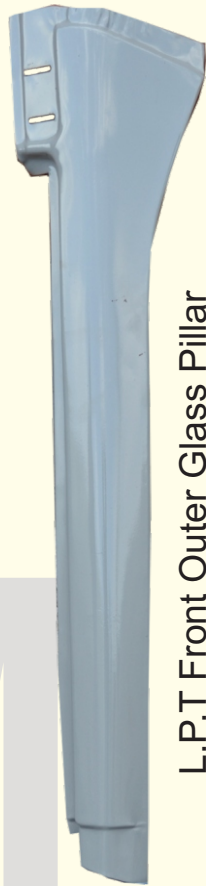
L.P.T Front Outer Wiper Panel.

M.M.E- 07



L.P.T Front Outer Glass Pillar (Bus)

M.M.E- 08



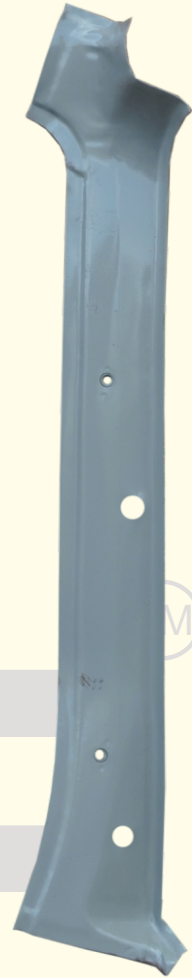
L.P.T Front Outer Glass Pillar

M.M.E- 09



L.P.T Front Door Pillar Comp. Assy.

M.M.E- 10



L.P.T Front Inner Glass Pillar

M.M.E- 11



L.P.T Front Mirror Patti

M.M.E- 12



L.P.T Front Van Cona

M.M.E- 13



L.P.T Front Show Grill Corner Patti

M.M.E- 14



L.P.T Water Channel

M.M.E- 16



L.P.T Handel Patti

M.M.E- 15



L.P.T Door Cover With Patti

M.M.E- 17



L.P.T Door Assy.



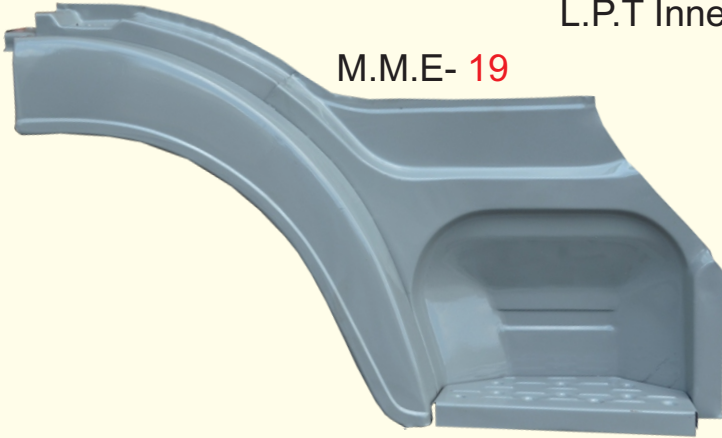
M.M.E  
ENGINEERING

M.M.E- 18



L.P.T Inner Golai

M.M.E- 19



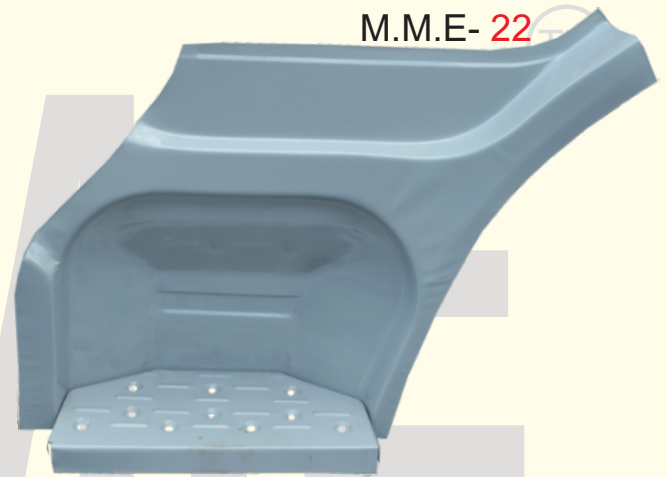
L.P.T Paydan Comp. Assy. (Murga)

M.M.E- 20



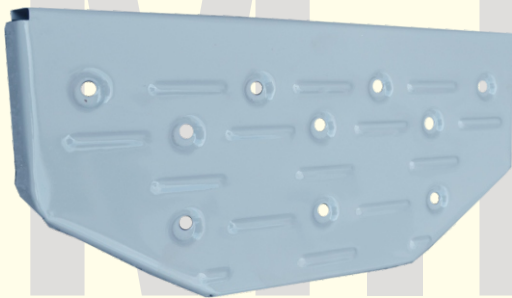
L.P.T U. Paydan

M.M.E- 22



L.P.T Half Paydan Taliya Assy.

M.M.E- 21



L.P.T Paydan Taliya

M.M.E- 23



L.P.T Inner Paydan

M.M.E- 24



L.P.T Outer Golai

M.M.E- 25



L.P.T Roof (Top)



M.M.E- 26



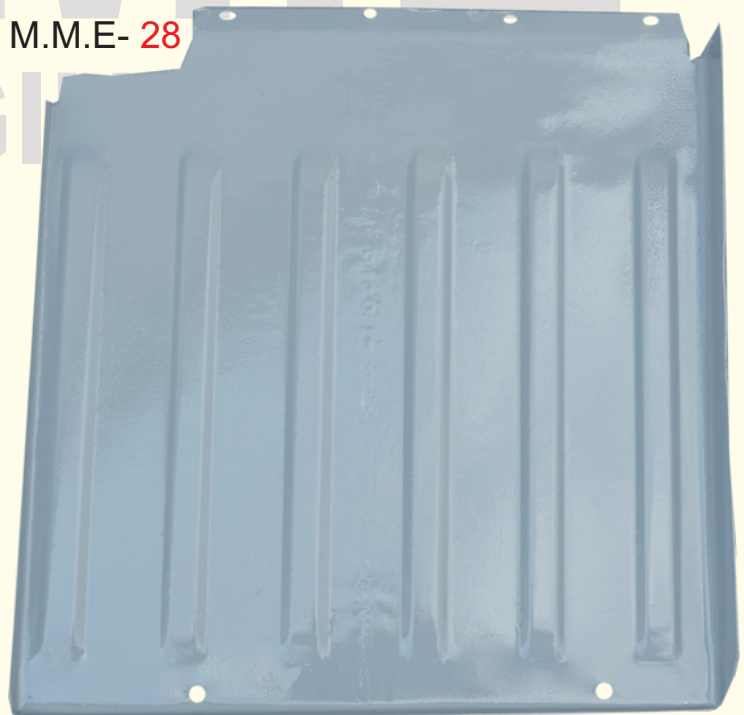
L.P.T Rear Pillar Comp. Assy.

M.M.E- 27



L.P.T Rear Pillar Lower Cona Patch

M.M.E- 28



L.P.T Tyre Mudguard

**M.M.E**<sup>TM</sup>  
**MM ENGINEERING**

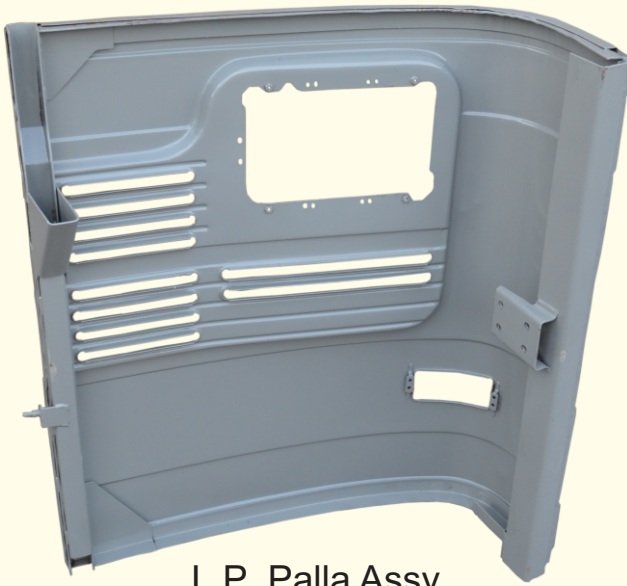
**LP**





L.P

M.M.E- 01



L.P Palla Assy.

M.M.E- 02



L.P Palla Cover



M.M.E- 03



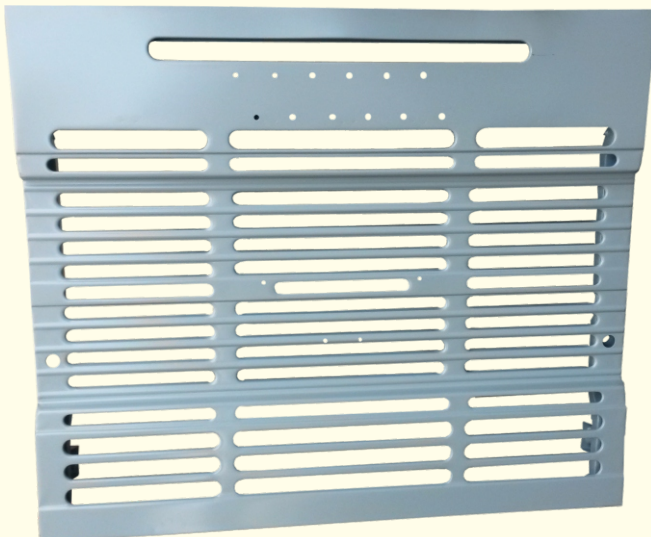
L.P Center Patta

M.M.E- 04



L.P Bumper Cona 3118

M.M.E- 05



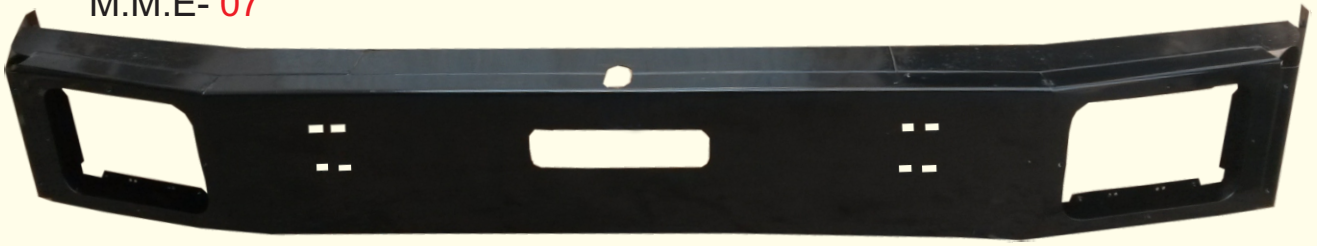
L.P Jali

M.M.E- 06



L.P Jali 3118

M.M.E- 07



L.P Bumper 3118

M.M.E- 08



L.P Bumper With Cona 3118

M.M.E- 09



L.P Two Clipe Bumper

M.M.E- 10



L.P Four Clipe Bumper

M.M.E- 11



L.P Bumper Assy.

M.M.E- 12



L.P Tc Bumper

M.M.E- 13



L.P Tc Bumper (N.M)

**M.M.E**<sup>TM</sup>  
**MM ENGINEERING**

**SE**



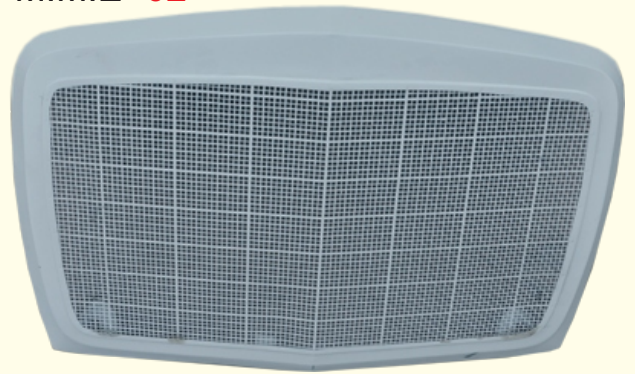
S.E

M.M.E- 01



S.E Bonnet Assy.

M.M.E- 02



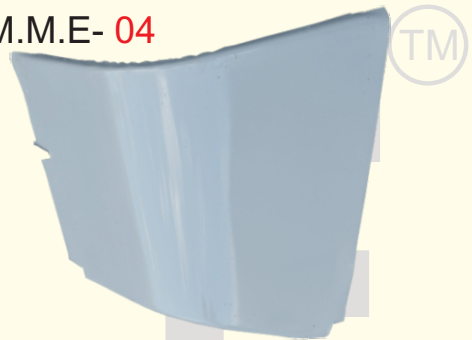
S.E Bonnet Frame Assy.

M.M.E- 03



S.E Mudguard

M.M.E- 04



S.E Small Mudguard

M.M.E- 05



S.E Inner Partition Assy.

M.M.E- 06



S.E Inner Partition (Sada)

M.M.E- 07



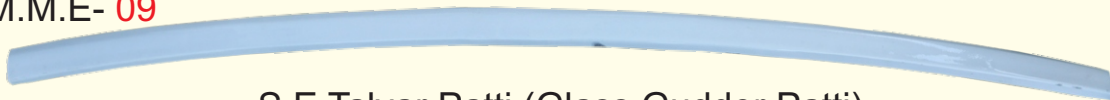
S.E Half Frame

M.M.E- 08



S.E Radiator Bracket

M.M.E- 09



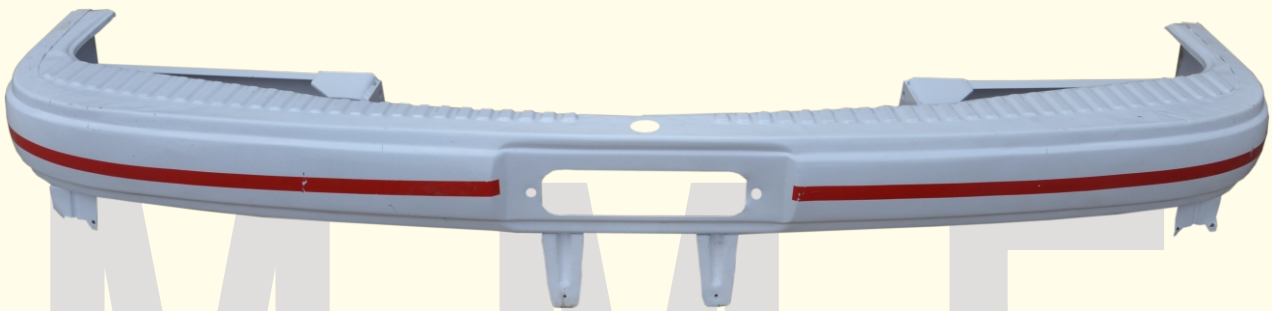
S.E Talvar Patti (Glass Gudder Patti)

M.M.E- 10



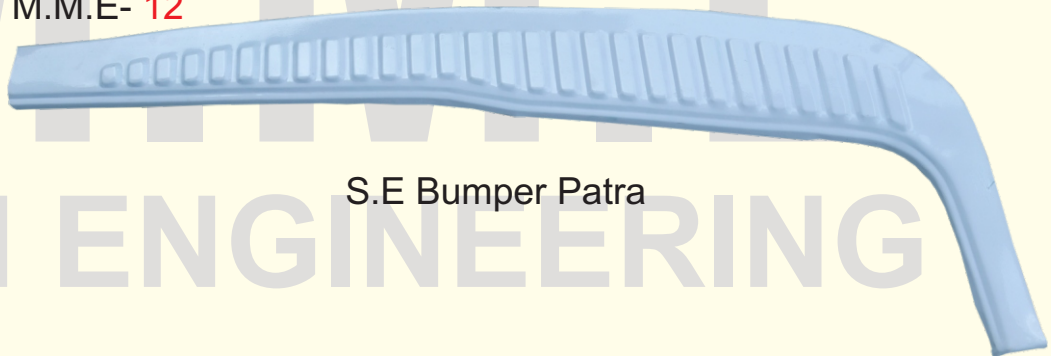
S.E Wiper Panel

M.M.E- 11



S.E Bumper Assy. (N.M)

M.M.E- 12



S.E Bumper Patra

M.M.E- 13



S.E Outer Glass Pillar

M.M.E- 14



S.E Outer Khidki Patch

M.M.E- 15



S.E Chasma

M.M.E- 16



S.E Center Dabda

M.M.E- 17



S.E Cabin Chappu

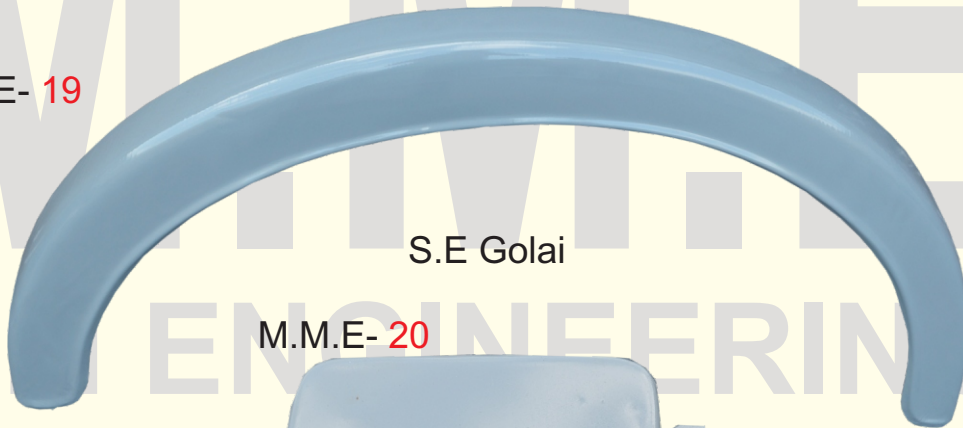
M.M.E- 18



S.E Door Chappu



M.M.E- 19



S.E Golai

M.M.E- 20



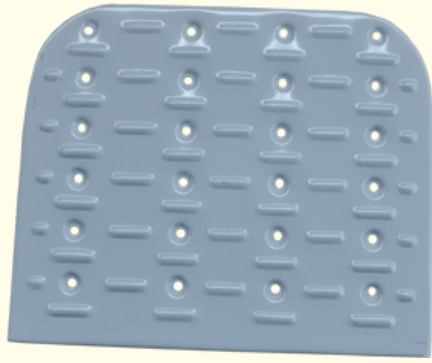
S.E Khidki Dhakkan

M.M.E- 21



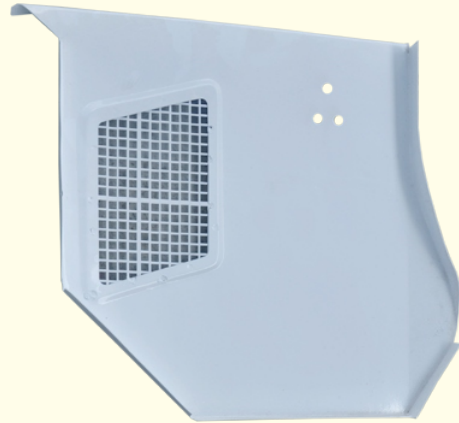
S.E Top Door Pillar Assy.

M.M.E- 22



S.E Paydan Taliya

M.M.E- 23



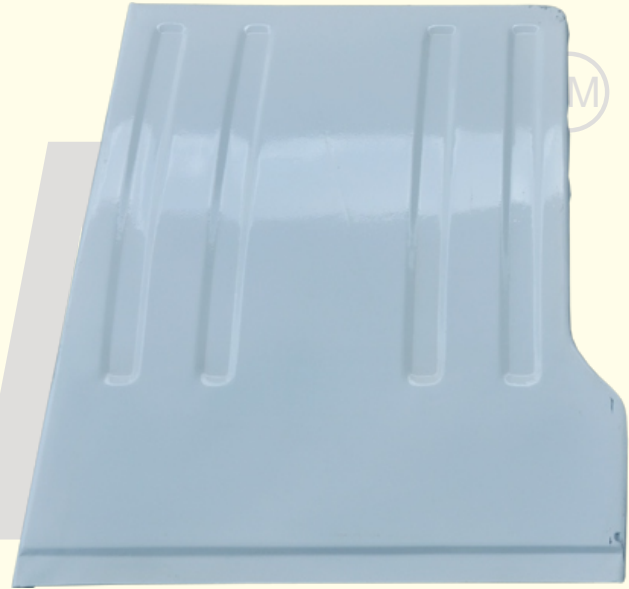
S.E Inner Khidki Patch

M.M.E- 24



S.E Four Line (Rear)

M.M.E- 25



S.E Four Line (Front)

M.M.E- 26



S.E Three Line

M.M.E- 27



S.E Five Line

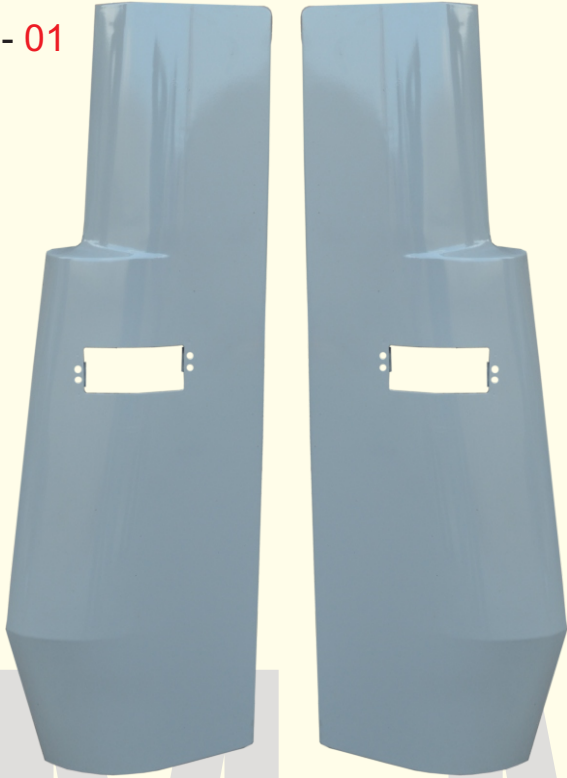
**M.M.E**<sup>TM</sup>  
MM ENGINEERING

**A.LAYLAND**



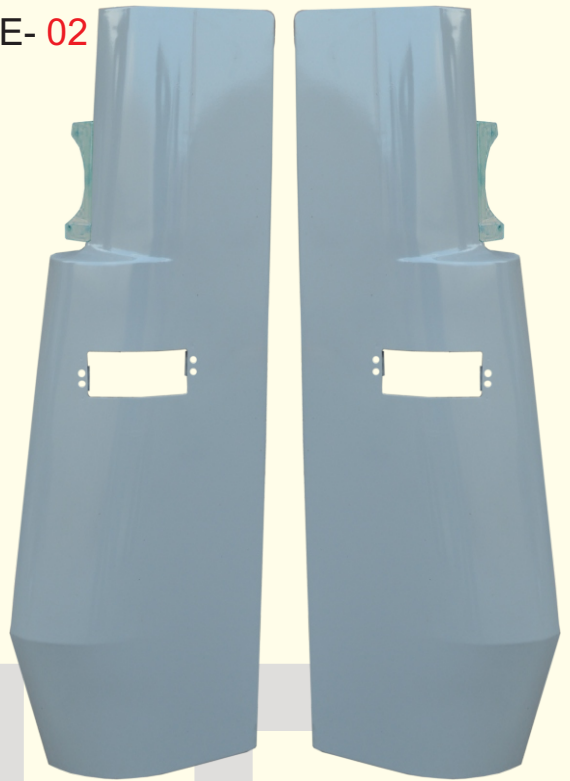


M.M.E- 01



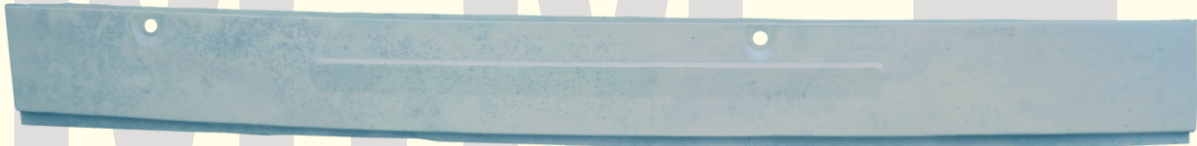
A/L Palla

M.M.E- 02



A/L Palla With Bracket

M.M.E- 03



A/L Wiper Panel

M.M.E- 04



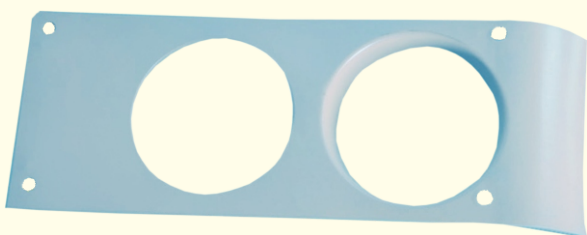
A/L Bumper

M.M.E- 05



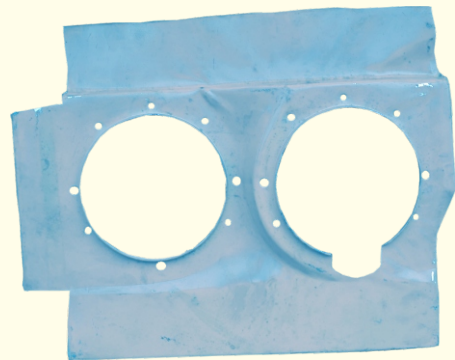
A/L Head Light Bazzer (O.M)

M.M.E- 06



A/L Head Light Bazzer (N.M)

M.M.E- 07



A/L Head Light Bazzer Inner (N.M)

M.M.E- 08



A/L Main Channel

M.M.E- 09



A/L Main Channel Assy.

M.M.E- 10



A/L Four Line

M.M.E- 11



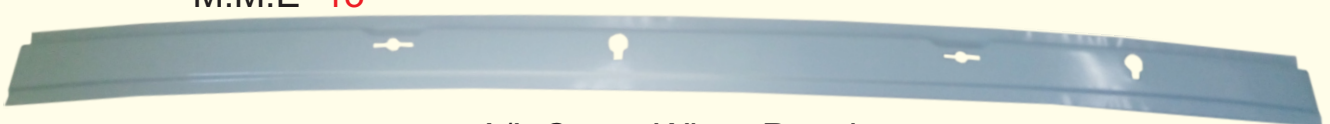
A/L Cargo Bonnet (N.M)

M.M.E- 12



A/L Cargo Bonnet (O.M)

M.M.E- 13



A/L Cargo Wiper Panel



# Quality Product



**M.M.E**<sup>TM</sup>  
**MM ENGINEERING**

1523, Opp.India Hotel, Highway, At. Rajosana, (Chhapi) B.K.  
Pin. 385210, N.Gujarat. Ph. 02739-271256

**MM ENGINEERING**